

We provide  
best services at  
the highest level



# Cetbix<sup>®</sup> ISMS RM

RISK ASSESSMENT AND MANAGEMENT

Cetbix ISMS extends beyond IT security to support the range of financial risk, operational risk, governance management and, data protection by offering the most secure and intuitive solutions to all leading industries globally.

[WWW.Cetbix.COM](http://WWW.Cetbix.COM)



# Contents

## CONTENTS

- 03 - Introduction
- 04 - Assessment
- 05 - Overview
- 06 - Solutions
- 15 - Benefits
- 16 - Why Us
- 18 - Other Products
- 19 - Contact Us

## CEO - STATEMENT

*The rapid growth in cybercrime is also shifting the market environment rapidly - CEO*



## Cetbix Risk Assessment and Management

An integral management risk solution which forms a part of the Cetbix Information Security Management System (ISMS)

## Overview

The Cetbix ISMS model combines both human intelligence and machine learning for organizations to make smarter decisions using data and analytics.

## Benefits & Price

Organizations need to measure, monitor and review the system's performance. This will involve identifying metrics or other methods of gauging the effectiveness and implementation of the controls.

## Contact Addresses

We are here to assist you in your journey to selecting the right intelligent Information Security solution for your environment.



# who we are

The Cetbix company Limited is located in London and in Ireland. Cetbix ("We") are working to achieve Vision. This calls for us to create a robust operating platform capable of delivering consistent growth under any conditions.

# what we do

We are providers of Information Security Management System and IT services. As a Technology company, we will guide businesses into the new era of cybercrime prevention. Our intelligent products provide organizations with secure business and applications and collaboration services.

- Information Security Management System
- Cybercrime prevention
- Finance Tech
- IT Consulting
- Cloud services
- Operation of IT systems

# contact us

Tel: +353 8183 700 60  
Kemp House, 160 City Road, London,  
Greater London EC1V 2NX.

**[WWW.Cetbix.COM](http://WWW.Cetbix.COM)**





2020

# ASSESSMENT AND MANAGEMENT

---

Cetbix Risk Assessment and Management is an integral management risk solution which forms a part of the Cetbix Information Security Management System (ISMS). It combines both human intelligence and machine learning for organizations to make smarter decisions using data and analytics to prevent cybercrimes. This gives organizations a prediction of their current security state.

In this pace of information technology (IT), information security risk has also increased. IT security risk is an important issue in industrial sectors, and in organizations that are innovating owing to globalization or changes in organizational culture. Previously, technology-associated risk assessments focused on various technical factors, but as of the early twenty-first century, the most important issue identified in technology risk studies is the human factor and the interrelationship between technology and human.

As businesses are becoming increasingly reliant on data. Most jurisdictions require companies to prepare and disclose annual reports on their security posture and it is therefore, vital that information is secure In the cybersecurity zone. Cetbix Risk Assessment and Management is the only information security management system that provides a 360 degrees secure intuitive risk assessment and management platform.

---

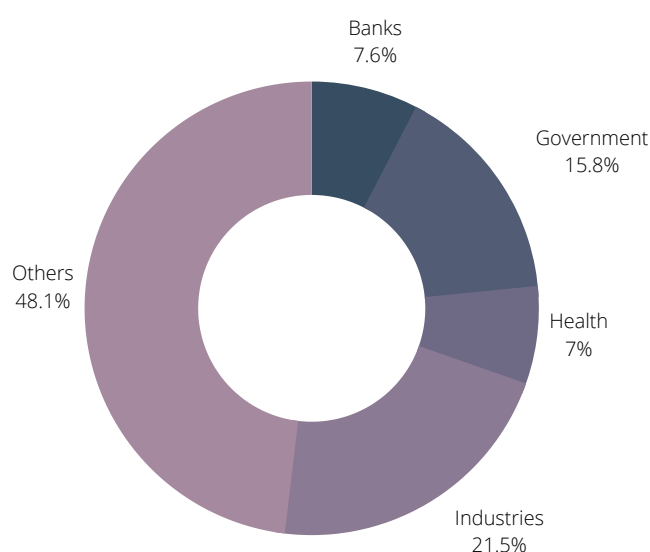
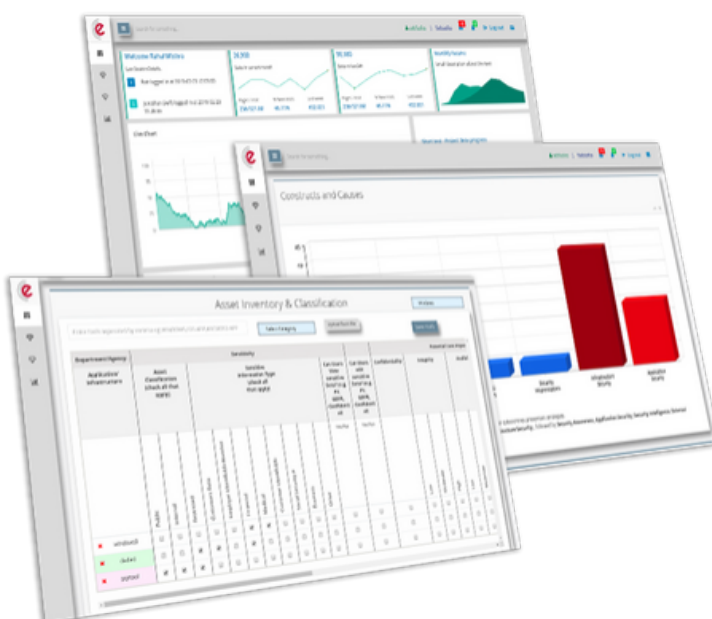
Cyber Crimes  
TODAY



The Cetbix® RM (with NFC) is a portable, simple and improved starting point when compared to other principles and frameworks, which come with different distinct features. For example, the ISO 27002 does not make a distinction between controls applicable to a particular organization and those which are not, while the ISO27001 prescribes a risk assessment to be performed in order to identify for each control whether it is required to decrease the risks, and if it is, to what extent it should be applied. Here, we can see that both standards are different, but lack the positive attributes of both tools when combined.

This is where the Cetbix comes in, taking usability in to consideration and utilizing a single standard that makes it simple and portable for practical use. The Cetbix RM also focuses on design, identification, and the mitigation of potential factors causing an overall hindrance to security-related policy compliance within an organization.

Every potential factor that generates any hindrance is a cause of variation that should be addressed in the Cetbix RM context, unlike the ISO27000 where standards are designed for certain focus. For example, the ISO27001 is for building an IS foundation in an organization, the ISO 27002 is for the control implementation, and the ISO 27005 is for carrying out risk assessment and risk treatment. The Cetbix RM combines all these with a 3-dynamic compliance process standard.



# Cetbix Risk Assessment OVERVIEW

More than 190 organizations worldwide trust Cetbix® ISMS to effectively manage their information security and continuous compliance with Data Protection Regulation and other standards for multi branches, locations, and entities.

Cetbix RM coordinates all security efforts both electronically, physically, coherently, cost-effectively, consistency and enables organizations to prove to potential customers that they take the security of their personal data seriously.

- Portable and simple when compared to other ISMS tools, which come with different distinct features.
- Takes usability into consideration and uses a single standard that makes it simple and portable for practical use.
- Avoids the oversimplified generalized guidelines that neglect the verification of the difference in information security requirements in various organizations.
- Provides a methodology that focuses on the issue of how to sustain and enhance organization cybersecurity through a dynamic process that involves: awareness of the situation, integration control, and gaps closing.
- Contributes to a more reliable, good practice of information security measures that help to educate leaders and secure the participation of employees in the context of information security management.
- Enhances collaboration.



# Cetbix Risk Assessment OVERVIEW

More than 190 organizations worldwide trust Cetbix® ISMS to effectively manage their information security and continuous compliance with Data Protection Regulation and other standards for multi branches, locations, and entities.



- Focuses on the design, identification, and mitigation of potential factors causing an overall hindrance to security-related policy compliance within an organization.
- Every potential factor that generates any hindrance is a cause of variation that Cetbix ISMS addresses, unlike the other ISM Stools where standards are designed for certain focus.
- In the event that an organization is having an inaccurate idea of their business domain security issues, the Cetbix ISMS will be the right approach.
- Provides organizations with more prominence attributes, such as, how employees react to policies, collaboration, communication, and commitment.
- Has a cost reductions mechanism that prevents unforeseen circumstances in the context of cybercrime mitigation.
- Prevents you from GDPR and other penalties and helps in ISO27001 certification.
- Integration of the NFC mechanism with 3 approaches.



# Cetbix Risk Assessment OVERVIEW

More than 190 organizations worldwide trust Cetbix® ISMS to effectively manage their information security and continuous compliance with Data Protection Regulation and other standards for multi branches, locations, and entities.

# SOLUTIONS



## Finance & Insurance



## Health & Hospitals



## Government



## Industry

Cetbix Risk  
Assessment

# OVERVIEW

More than 190 organizations worldwide trust Cetbix® ISMS to effectively manage their information security and continuous compliance with Data Protection Regulation and other standards for multi branches, locations, and entities.



# SOLUTIONS



## Cetbix Risk Assessment OVERVIEW

More than 190 organizations worldwide trust Cetbix® ISMS to effectively manage their information security and continuous compliance with Data Protection Regulation and other standards for multi branches, locations, and entities.

## Quantifiable risks

- **Operational risk** - defining the potential loss due to failures or deficiencies in internal controls, errors in the processing and storage of operations or in the transmission of information, as well as adverse administrative and judicial decisions, fraud or theft and external events.
- **Technological risk** - defining the potential loss due to damage, interruption, alteration or failures arising from the use or dependence on hardware, software, systems, applications, networks and any other information distribution channel in the provision of services with customers or right holders of the Development Agencies and Development Entities (depends on ISO 27001).
- **Legal risk** - defining the potential loss due to non-compliance with applicable legal and administrative provisions, the issuance of unfavorable administrative and judicial decision sand the application of sanctions, in relation to the operations that the Development Agencies and Development Entities carry out.
- **Discretionary risks** - resulting from the taking of a risk position, such as:
  1. Credit risk
  2. Liquidity risk
  3. Market risk
  4. Extension risk



# Cetbix Risk Assessment OVERVIEW

More than 190 organizations worldwide trust Cetbix® ISMS to effectively manage their information security and continuous compliance with Data Protection Regulation and other standards. for multi branches, locations, and entities.



## Assessment of risks

- Factor Analysis
- Risk Evaluation Dashboard
- Risk Assessment & Evaluations
- Constructs
- Situation Awareness
- PEST Analysis
- GAP Analysis
- Data classification
- Data Element Classification
- Global Security Benchmark
- Asset Inventory and classification
- Risk acceptance report
- Branding
- Default Document keeper
- Road-map & Charter
- RACI
- KPIs
- Metrics 6 Approaches
- Critical success factor
- Organization & Business Partners Effort
- Machine learning analysis
- SWOT Analysis
- Score Cards
- Change & communication plan
- Program Metrics
- Security Service
- Digital signature
- Project Management
- Financial & Project Timing Goals
- ...and many others

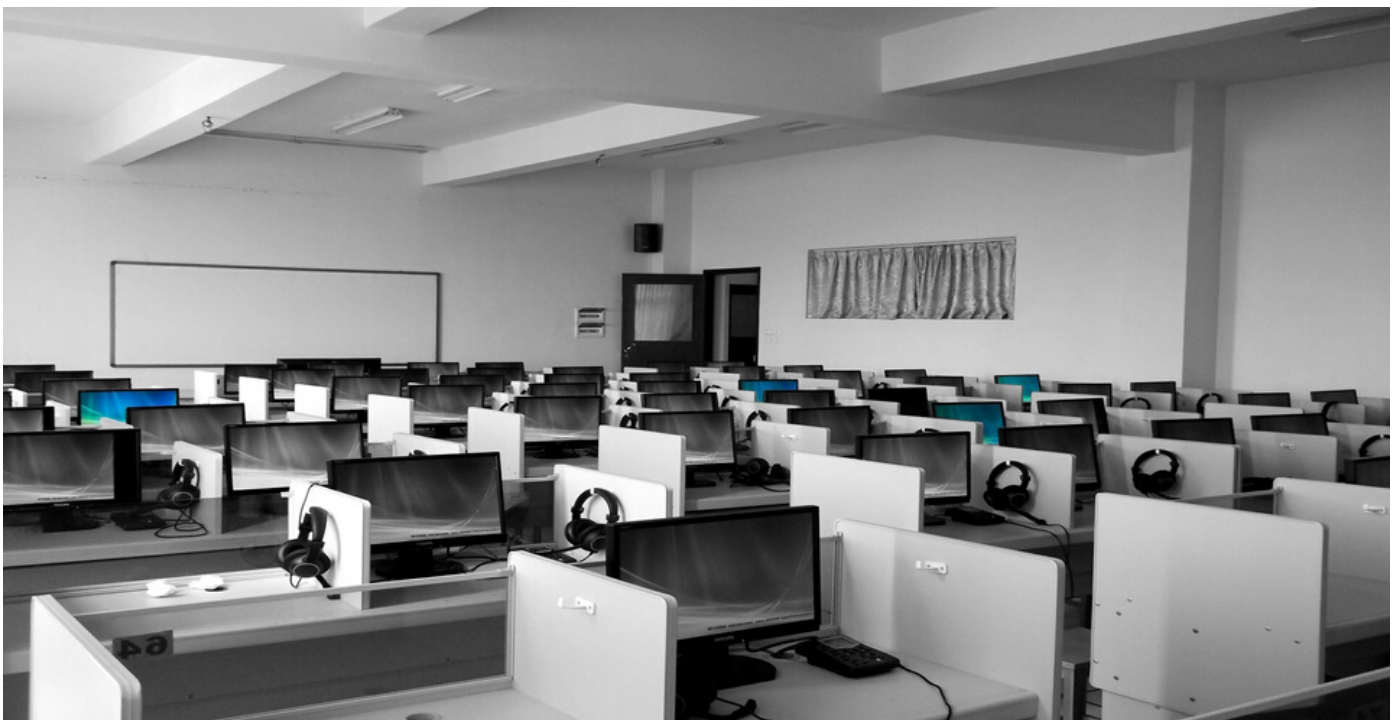


# Cetbix Risk Assessment OVERVIEW

More than 190 organizations worldwide trust Cetbix® ISMS to effectively manage their information security and continuous compliance with Data Protection Regulation and other standards for multi branches, locations, and entities.

## Asset Quantifiable risks

- Return On Investment,
- Payback Period,
- Net Present Value,
- Internal Rate Of Return,
- Benefit/Cost Ratio,
- Discount Cost Benefit
- Factor (EF)
- Single-Loss Expectancy (SLE)
- Annualized loss expectancy (ARO)
- Unit Per Frequency (UF)
- Unit Per Frequency (UF Total)
- Annualized Loss Expectancy(ALE)
- ...many more



# Cetbix Risk Assessment OVERVIEW

More than 190 organizations worldwide trust Cetbix® ISMS to effectively manage their information security and continuous compliance with Data Protection Regulation and other standards for multi branches, locations, and entities.



**In addition to other risk issues, Cetbix ISMS looks into the following:**

- Identification of risks, description of type, causes, and effects.
- Analysis of the identified risks with regard to their probability of occurrence and possible effects base on the Monte Carlo analysis.
- Breaks several risk incidents to comprehensive constructs.
- A risk assessment by comparison with risk acceptance criteria to be defined in advance.
- Risk management and risk control through measures.
- Integration with the Internal Control System (ICS).
- Risk categorization and risk aggregation (incl. client capability).
- Risk monitoring with reminder notifications and workflows.
- Risk records for the documentation of all processes.
- Predefined risk reports and the possibility to create your own reports (Report Designer).
- 3D Risk management dashboard for data visualization.



# Cetbix Risk Assessment OVERVIEW

More than 190 organizations worldwide trust Cetbix® ISMS to effectively manage their information security and continuous compliance with Data Protection Regulation and other standards for multi branches, locations, and entities.

## Security base on regulations

Cetbix ISO27001 additional feature enables organizations to:

- Control documents relevant to information security (specifications, verification).
- Management of information security risks e.g. according to ISO 27001 or ISO 27005.
- Recording and tracking of information security measures.
- Inventory and classification of the objects of protection (asset inventory) including inheritance of the need for protection.
- Management of security incidents (Security Incident Management).
- Management of Exceptions to Security Targets (Exception Management).
- Preparation of the Statement of Applicability (SOA).
- Performing gap analyses and audits based on **Banking Regulations, Insurance Regulations, Information Security Regulations, Global Competitive Regulations, Local Competitive Regulations, Compliance, Industrial Regulations, Consumer Product Regulations, International Regulations, Governmental Regulations, EU Regulations, USA Regulations and others.**
- Reporting and dashboard for Information Security.



# Cetbix Risk Assessment OVERVIEW

More than 190 organizations worldwide trust Cetbix® ISMS to effectively manage their information security and continuous compliance with Data Protection Regulation and other standards for multi branches, locations, and entities.



2020

## BENEFITS

- Secures your information in all its forms.
- Increases resilience to cyber attacks.
- Provides a centrally managed framework.
- Offers organisation-wide protection.
- Helps respond to evolving security threats.
- Reduces costs associated with information security.
- Secures and protects confidentiality, availability and integrity of data.
- Improves company culture.
- Get certified.
- Credibility, trust and confidence of your customer.
- Greater awareness of security.
- Compliance with legislation.
- Prevention of confidentiality breaches.
- Prevention of unauthorized alteration of critical information.
- Prompt detection of data leakage and fast reaction.
- Competitive advantage - deciding differentiator in contract negotiations.
- Meeting international benchmarks of security.



Cyber Crimes  
TODAY

2020

## WHY US?

- Accepted and represented worldwide.
- Long-standing experience.
- Over 25,000 companies using Cetbix® services
- Reliable, impartial, cost-effective, confidential and localized certification services with several local accreditation.
- Use of Cetbix®platform makes your competitive edge clear.

### PRICE

**From ~€3.500,00 - €33,500 / Subscription.**

**Visit our website to request for a demo trial!  
Ready for Cetbix? Let's get started.**

Cyber Crimes  
**TODAY**





2020

## WHY YOU NEED THIS TOOL?

---

**Large organizations** have countless methods of internal and external communication, each of which can lead to a breach in confidentiality and even more importantly, a leak of crucial information to competitors and the outside world.

Every year, confidential information of millions of customers are exposed to potential fraud in data breaches, e.g. in 2007, a major retailer lost over 90 million of customer data, in 2008 a major bank lost over 10 million of confidential information in data breaches and Marriott international currently faces a £99 million GDPR fine as the ICO reports public awareness of information rights is soaring.

Furthermore, imagine this should happen to your organization?

- How much will this cost you?
- Can your company bear such costs?

Considering the consequences, the importance of setting up a comprehensive information security management system immediately becomes apparent.

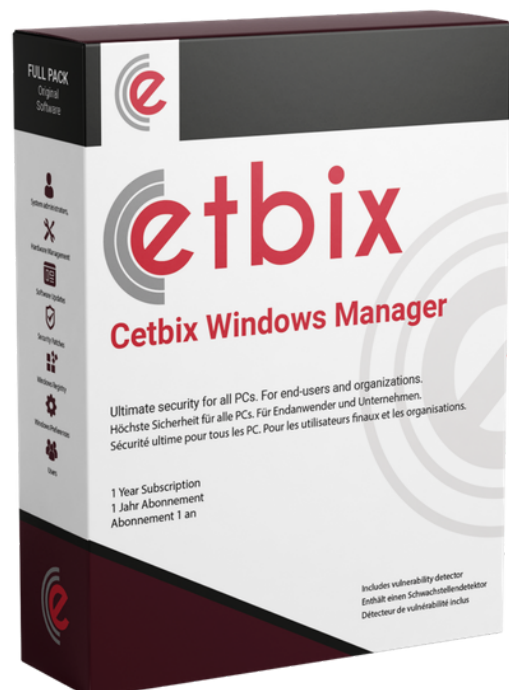
---

Cyber Crimes  
TODAY

2020

## OTHER PRODUCTS

- Information Security Management System (ISMS)
- Risk Assessment & Management
- Asset Management
- Document Management
- Application Management
- Vulnerability Management
- Data Protection and Human Resource Management
- SaaS Customer Complaint Management
- Learning Management System
- Electronic Driving licence control
- Windows Manager For Professionals



Cyber Crimes  
TODAY





# Contact Us

London Office  
Kemp House,  
160 City Road,  
EC1V 2NX

Email: [uk\(at\)cetbix.com](mailto:uk(at)cetbix.com)

Tel: +353 8183 700 60

[www.cetbix.com](http://www.cetbix.com)

Ireland Office  
North Circular  
Road Dublin  
Ireland

Email: [ir\(at\)cetbix.com](mailto:ir(at)cetbix.com)

Tel: +353 8183 700 60

[www.cetbix.com](http://www.cetbix.com)

Scotland Office  
16 Mackenzies drive  
Kirkwall Orkney Island  
KW15 1FE Scotland  
Email: [sc\(at\)cetbix.com](mailto:sc(at)cetbix.com)  
Tel: +353 8183 700 60  
[www.cetbix.com](http://www.cetbix.com)

Copyright ©2020 all rights reserved

Cetbix LTD

Registrar of Companies for England and Wales -No: 11787688



**cetbix**

**[www.cetbix.com](http://www.cetbix.com)**

Copyright ©2020 all rights reserved

Cetbix LTD

Registrar of Companies for England and Wales -No: 11787688